

AUG, 2025

Website: www.shumas.org

NEWSLETTER (VOL 6 & 7)

SHUMAS



(MFORMI) NDZEREM STEPHEN NJODZEKA (1970-2025)

IN THIS EDITION

- EDUCATIONAL ARTICLES
- ECONOMIC EMPOWERMENT
- FOOD SECURITY ARTICLES
- HEALTH AND NUTRITION
- WASH ARTICLES
- ENVIRONMENT
- WORK PLAN FOR AUG
- TESTIMONIES
- FUNERAL GALLERY OF PA SHUMAS

MFORMI NDZEREM STEPHEN NJODZEKA THE COMPASSIONATE AND PASSIONATE LEADER

The Director General of SHUMAS of blessed memory, Mformi Stephen Njodzeka was an epitome of humility. A highly talented leader, willing to lend a helping hand to everyone he came across.

His interest in creating a positive impact everywhere he stepped his feet and his tireless dedication symbolised that his humanitarian service was more of a vocation than a profession.

The hundreds of young people and organisations that he mentored prove his selfless service to humanity.

SHUMAS will continue to blossom, thanks to his foresight in building a strong team that will carry on his legacy.

EDITORIAL

HONORING A LEGACY AND ADVANCING WITH PURPOSE

This season marks a time of profound reflection for the SHUMAS family. As we honor the life and contributions of our late Founder and Director General, Mfòomé Ndzere Stephen Njodzeka, we are deeply moved by the enduring legacy he leaves behind. It is a legacy defined by compassion, humility, visionary leadership, and an unshakeable commitment to human development.

Fondly remembered as Pa SHUMAS, he was more than a leader; he was a symbol of hope. He championed the potential within every individual and believed in the power of collective resilience. His humanitarian values continue to inspire the work we do today. This is visible in every school we construct, every water point we install, every child we reintegrate into the education system, and every farmer we empower through sustainable agriculture.

In this edition of our newsletter, you will find tangible examples of SHUMAS' ongoing community impact. Whether delivering life saving WASH interventions to internally displaced families in Galim, classroom construction, reintegration of children who dropped out of school into formal schools distributing dignity kits to adolescent girls in Bamenda, or strengthening agricultural cooperatives across the North West region, our mission remains active, relevant, and transformative.

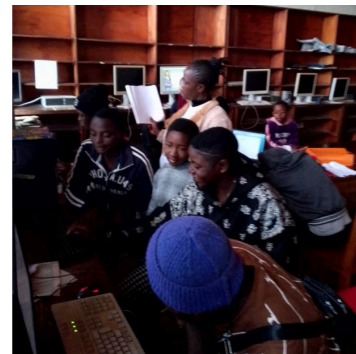
We are equally grateful for the strategic partnerships that make this work possible. Collaborations with organizations such as UNICEF, WFP, Building Schools for Africa, IRC, Manos Unidas, Spreading Health and others amplify our ability to scale impact and reach the most vulnerable populations. These alliances serve as a reminder that sustainable change is achieved through shared vision and collective action.

To our donors, partners, volunteers, and friends, thank you for believing in our mission. Your support is not only appreciated, it is essential. As we navigate this period with both sorrow and hope, we remain anchored in our purpose. The most meaningful way we can honor Pa SHUMAS is by continuing to serve, continuing to innovate, and continuing to lead with integrity.

Let us move forward together, united by compassion, driven by courage, and committed to building resilient communities for generations to come.

Kumbo Public Science Laboratory: Advancing Youth Learning and Development in Bui Division

Since January 2025, the **Kumbo Public Science Laboratory**, supported by SHUMAS with funds from CITI Bank, has been a key center for youth empowerment in Kumbo Subdivision, Bui Division. It has facilitated science practical lessons in Biology, Chemistry, and Physics for 12 holiday learners (6 girls and 6 boys), provided ICT training to 8 youths (5 males and 3 females), and offered psychosocial support to 4 traumatized youths affected by the socio-political crisis. The center continues to serve as a hub for hands-on learning, sciences, digital skills development, and emotional recovery, contributing meaningfully to the growth and resilience of young people in the region.



Students during practical session

NEW SCHOOL CONSTRUCTION BRINGS HOPE IN BAGAM. (ONGOING)

EP Bagam, located in the Galim Subdivision of Cameroon's West Region, faced severe infrastructure challenges despite enrolling 404 pupils and hosting over 139 IDPs. With only a single PTA-constructed building and a dilapidated community hall used as classrooms, learning conditions were poor.

In response, SHUMAS, in partnership with Building Schools for Africa (BSA), launched a project to improve educational access and quality. By June 2025, construction of three classrooms, an office, a store, and a gender-segregated VIP toilet facility was completed, along with the provision of essential furniture. The project is expected to benefit 180 pupils, three teachers, and the head teacher, improving academic performance and encouraging school attendance in 2026.



Situation before



Newly Constructed



Temporal toilet



New constructed toilet

Monitoring of UNICEF ECHO II Education Project in Northwest CMR

In July, SHUMAS, as the third-party monitor for the UNICEF ECHO II project in Northwest Cameroon, carried out monitoring activities across 70 temporary learning spaces in six divisions. Working with five implementing partners, SHUMAS ensured alignment with project goals addressing education, WASH, and child protection needs of crisis-affected children. Key activities included a quarterly assessment of learning outcomes and a mid-line protection mainstreaming assessment to evaluate the safety of learners and beneficiary perceptions of humanitarian service delivery. Recommendations led to timely corrective actions by partners.



Monitoring activities in Babessi sub division

SHUMAS IGNITES HER PARTNERSHIPS

SHUMAS partners from Spain; Manos Unidas, paid a strategic visit to SHUMAS in the month of July, to review future projects. The successful discussions paved the way for potential projects that will benefit vulnerable persons in Cameroon especially women and children. Some SHUMAS ongoing projects in the West Region were visited. The Neighborhood Learning Corner in Galim and the ongoing construction of EP Bagham GRP 3 still in Galim; funded by Building Schools for Africa.



Distribution of NFIs at the Santa District hospital

Following last month's donation to the Bamenda Regional Hospital, this month SHUMAS extended its support to Santa District Hospital, responding to urgent needs identified by the hospital team.

The donation included 400 adult diapers, 1000 Albendazole tablets, 30 bars of soap, face masks, protective gowns, thermometers, and other essential medical items. These supplies are already making an impact—around 40 adults have benefited from the diapers, and 1,000 children will be protected from parasitic infections through the Albendazole tablets.

This support is improving patient care, infection control, and overall health outcomes at the facility. By directly addressing critical gaps, SHUMAS continues to strengthen healthcare delivery and promote dignity, comfort, and well being in local communities.

Motivation of mothers



Resilience in Action: SHUMAS Boosts Livelihoods through Food-for-Work Support.

In July 2025, SHUMAS in partnership with WFP, made strong progress in its Food Assistance for Assets (FFA) Resilience Project, reaching 14 communities across the Northwest Region of Cameroon. The project supports 6,000 vulnerable individuals, especially women and internally displaced persons (IDPs), by combining food aid with hands-on livelihood activities. Over 1,100 participants (mostly women) took part in tasks like land preparation, planting, composting, fishpond and poultry management. These efforts are already bearing fruit— with 210kg of beans harvested in Big Babanki and 200kg of fish in Bali. SHUMAS also distributed over 64,000 sweet potato vines and 130 liters of nightshade seeds to strengthen food security.

Meanwhile, 23 Village Savings and Loan Associations (VSLAs) continued to thrive, helping women save and invest in small businesses. Stories like that of Grace Mumbfu, a blind widow, and Manli Marceline, a mother of four, who used their savings to rebuild their homes, show just how life-changing this project can be. Looking ahead, SHUMAS plans to scale up harvesting and expand community infrastructure, keeping resilience and sustainability at the heart of its work."



Fish Pond In Nzah



Fish Pond in Big Babanki



Making of compost heap in Big Babanki



Harvesting of beans in Big Babanki

EJUMULA NURSERY FARM

Objective: promoting EJUMULA sweet potato- A Resilient food security crop. The EJUMULA and NASPOT sweet potato varieties are highly nutritious, rich in vitamin A, and well-suited for food security and sustainable agriculture. With early maturity (3–4 months), moderate drought tolerance, and resistance to viral and fungal diseases, they thrive in well-drained soils with moderate rainfall, making them ideal for rural and crisis-affected areas. SHUMAS cultivates these varieties at its office farm to ensure a continuous supply of improved vines and currently has cuttings available for distribution. Interested farmers can contact SHUMAS at **672 52 33 41**.



EJUMULA nursery bed

checking tuber development



Counting and packaging of vines for distribution

Client Centered Humanitarian Response project: Improving the lives of crisis affected People in Abangoh and Ntanghang Bamenda 1 Sub-division of the North west region of Cameroon.

SHUMAS, in partnership with the International Rescue Committee (IRC), is carrying out a client-centered humanitarian response project in the communities of Abangoh and Ntanghang in Bamenda 1 Sub-division. Running from May 2024 to February 2025, the project is designed to support around 400 vulnerable individuals, including 30 protection cases, through Multi-Purpose Cash Assistance. It also focuses on building resilience by creating six Village Savings and Loan Associations (VSLAs) and supporting income-generating activities and agriculture for 175 clients.

Since the project began, SHUMAS and IRC have made strong progress. They have held capacity-building and experience-sharing workshops, developed joint policies in key areas like program management, finance, MEAL, safeguarding, and procurement. They have also engaged stakeholders, conducted focus group discussions and household profiling, verified clients, and trained local Community Feedback Mechanism committees.

This partnership reflects a shared commitment to supporting crisis-affected communities in a practical and meaningful way, helping them recover and rebuild their lives with dignity.



IRC Intervention



Last month, crucial two-day training on Prevention of Sexual Exploitation and Abuse (PSEA) was successfully conducted for SHUMAS enumerators involved in the IRC-SIDA project. Held at the main conference hall, the initiative aimed to equip our field staff with essential knowledge and tools to uphold the highest standards of conduct and protect vulnerable populations. The training, which took place over two impactful days, covered a comprehensive range of topics. Participants engaged in in-depth discussions on the principles of PSEA, understanding the various forms of exploitation and abuse, and the critical importance of maintaining professional boundaries. Interactive sessions fostered a safe space for questions and provided practical scenarios to solidify understanding.

Key modules included survivor-centered approaches, reporting mechanisms, and the crucial role each enumerator plays in preventing and responding to PSEA incidents. The facilitators emphasized the zero-tolerance policy towards any form of misconduct, reinforcing SHUMAS's unwavering commitment to safeguarding those we serve. Feedback from the enumerators was overwhelmingly positive, with many expressing increased confidence in their ability to identify, report, and prevent potential PSEA risks. The training was hailed as highly impactful, providing invaluable insights that will undoubtedly strengthen our operational integrity and foster a safer environment for communities benefiting from the IRC-SIDA project. This initiative underscores our dedication to ethical practices and the well-being of all stakeholders.

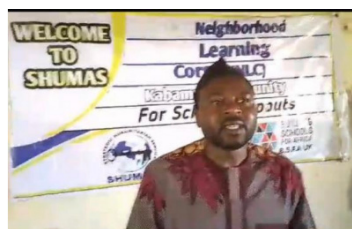
Testimonies

75 vulnerable IDP women who benefited from SHUMAS Economic Empowerment support were monitored in Yaoundé and Bamenda in the month of June. 80% of the women visited reported a remarkable increase in their income level with an improvement in their Food Security, Health status, and most critical an improvement in the enrollment of children in school and performance of the children. Below is a testimony from a beneficiary whose life has taken a turn because of the assistance provided.



My name is Bomki Juliet a beneficiary from SHUMAS Economic Empowerment program. My life took a complete turn when I benefited from SHUMAS training and support to start my business. Before I received assistance, I was barely surviving from sells of huckleberry which was seasonal. Two of my Kids dropped out of school and life was very tough which made me lose my self-esteem and depression. Today with SHUMAS assistance I gained knowledge on how to manage a business and received support to start my mini restaurants which has enabled me to more than triple my income. My children are back in school and doing well. I feel happier, more confident and empowered. Am grateful

I am CHE EMMANUELA LUM from BUWE Bukari Community, level 100 of nursing student of TSSRN. It is with great joy in my heart that I penned down these words to testify how SHUMAS Spreading Health UK have transformed y life through the nursing scholarship. I had dreams of becoming a nurse when I was growing up, but when I had my Advanced level, those dreams seem to have been shattered due to the fact that I had no one to sponsor me to further my education, Out of nowhere SHUMAS Spreading Health rekindle in me those dreams of becoming a nurse and serving my community. After completing my studies I will be able to give back to my community the knowledge I have acquired all these years and better their health situation. A big thank you to SHUMAS and Spreading Health Uk for giving me this golden opportunity to pursuit my dreams.



FORMAL SCHOOL TRANSITIONING TESTIMONIES FROM BABESSI

Wuzেকে Daoda (Parent to out of school child)

I am a parent of one of the school dropout from Babessi community. I am sograteful to SHUMAS and Building Schools for Africa for creating NLCs.

In fact, this crisis has affected many of us parents and children in thiscommunity adversely. We are really happy with SHUMAS as it's the secondtime of bringing this kind of help and putting smiles on the Faces of the entirepopulation. This project should never end as there are still many more out ofschool children in Babessi that have not benefited from this humanitariangesture. My worries and that of my entire household are resolved as mydaughter has received nearly all the learning materials with tuition fee paid. I could not do all these as before thecrisis, I usually ride a bike for a living which was burnt down within the crisis allowing me and my entirehousehold to live only from hand to mouth.

May The Good God continually bless you SHUMAS and Building schools for Africa and may your pockets neverruns dry.

Safiatou Ntoh (Babessi)

I am Safiatou Ntoh, 13 years old from Mumbeh NLC in Babessi. I and mysiblings have suffered a lot due to the crisis after our parents died as a resultof the crisis. Access to education became a serious challenge as we now live with our unclethat currently is helpless and on a wheel chair. My educational dreams became shattered but to the mercy of SHUMAS and Building Schools for creating theNLC for children like me. I got enrolled and was provided with writing materials. Before being enrolled into the NLC, I could read nor write. Today I can boast of being able to write a composition thanks to the efforts of SHUMAS and Building Schools for Africa. I again thankful to SHUMAS and Building Schools for Africa for providing me with learning materials (Exercise books, pens, pencils, rulers, school bags). It's worth mentioning that school fee has been paid in the Islamic Primary School for the 2026 academic year, a school I have chosen to pursue my education.

The creation of NLCs should never stop as there are many more out of school children that do not have this lifesaving opportunity like me. Thanks very much SHUMAS and Building Schools for Africa for continuously restoring hope to children of my king.



SOME KEY ACTIVITIES FOR AUG

EDUCATION	Activity	Results
<p>1. Neighborhood Learning Corner Project Babessi and Galim. (Building Schools for Africa)</p> <p>2. ECHO II Educational Project in 6 Divisions of the North West Region. (UNICEF)</p> <p>3. School Construction Projects in CS Moh and CETIC Bilingue de Koupa – Menke (Building Schools for Africa)</p>	<p>Follow-up of transitioned children, collection and analysing of project feedback through established feedback mechanism.</p> <p>Conducting of focused group discussions in all sites. SEA sensitisations.</p> <p>Completion of structures and finishing.</p>	<p>Sustainability and Better program .</p> <p>Feedback and accountability and Increased SEA awareness and reporting.</p> <p>200+ pupils study in a safe and conducive environment. WASH situation of school improved.</p>
HEALTH AND NUTRITION	Activity	Results
<p>1. UNICEF Nutrition Project in the Far North.</p> <p>2. Training of Nurses in rural and poor communities of the North West Region.</p>	<p>Community Engagements and screening for Malnutrition.</p> <p>Active participation of over 100 trained nurses in their various communities and meeting with spreading health students.</p>	<p>Significantly curb malnutrition in children between 6 – 59 months in the Far North Region of Cameroon.</p> <p>Improved medical assistance in poor and rural communities of the North West Region.</p>
WASH	Activity	Results
<p>1. WASH Distribution Project in Health Facilities in the NWR.</p>	<p>Follow up, analysing feedback and reporting.</p>	<p>Sustainability, Feedback and accountability.</p>
FOODSECURITY	Activity	Results
<p>1. WFP Emergency Project to Combat Food Crisis in the NWR / Food Assistance For Asset Creation (FFA) .</p> <p>2. WFP Emergency Project to Combat Food Crisis in the NWR / Small Holder Agricultural Market Support (SAMS).</p> <p>3. WFP Emergency Project to Combat Food Crisis in the NWR / Nutrition.</p>	<p>Management of 45 hectares of diverse crops and rehabilitation of earthen , 5 concrete and 5 shallow fishponds. Treatment installation of 5 solar pumps and stocking along with feeding 650 table birds.</p> <p>Reception of N Flat the 5 already constructed warehouses.</p> <p>Milk extraction and dairy production.</p> <p>Weeding of farms.</p> <p>Village savings and Loans Association.</p> <p>Complete various tasks including home visits, IYCF support, positive deviance activities, PV for PBE, caseload submission, May distribution, and weekly, monthly, and quarterly reports.</p>	<p>1,200 households in 14 communities of the crisis stricken NWR receive sustainable agriculture assets to mitigate food insecurity and improve on their livelihoods.</p> <p>Complete weeding, application of manure and moulding.</p> <p>Extract at least 4000l of milk.</p> <p>Add an additional site for positive deviance managing a minimum of 10 boys and girls MAM cases in the community. Complete the distribution of 1.299MT of CSB++ to 433 boys and girls in the targeted communities. Reach over 1000 men and women with nutrition sensitive messaging and cooking demonstrations.</p>
OUR PARTNERS		



SHUMAS' SAFE SHELTER : A SAFE HOME FOR GBV AND SEA SURVIVORS

Gender-based violence (GBV) is a pervasive and devastating issue that affects individuals, families, and communities worldwide. In Cameroon, SHUMAS' Safe Shelter is providing a beacon of hope for survivors of GBV and SEA, offering a confidential, inclusive, and supportive sanctuary for those seeking refuge.



CONTRIBUTORS

Asoh Tina
Yenyuy Lilian
Muluh Derrick
Verla Erasmous
Tabifor Emmanuel

EDITORS

Omer Tawong
Berinyuy Gisela
Sama Paltiel Yeti

EDITOR-IN-CHIEF

Henock Njodzeka

MANAGING EDITOR

Mrs. Billian Nyuykighan



CONTACT: 672523341, 679852090, 677775630

strategichumanitarianservices@gmail.com